

# Outlook 2007 for Exchange

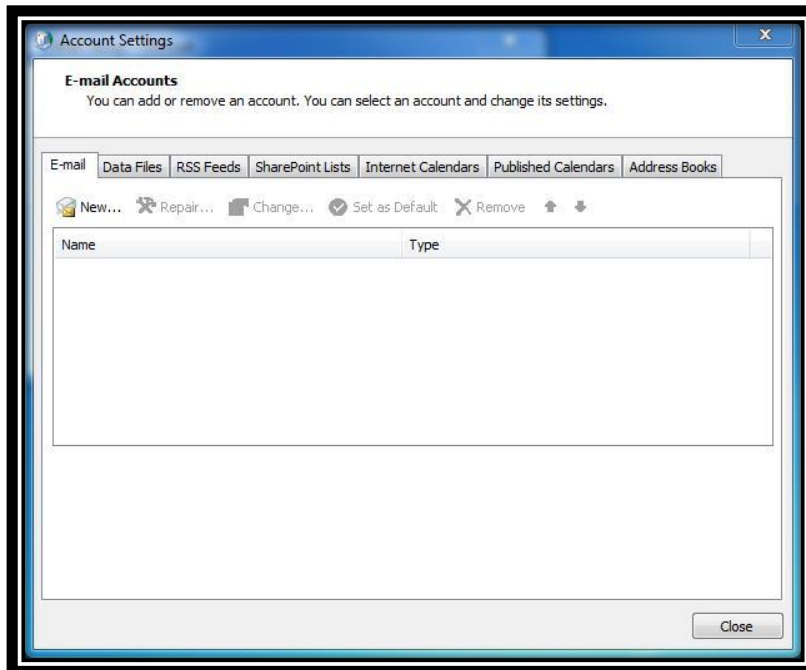
## 1. Open Mail Setup.

- Double-click the Mail icon in the Control Panel to open the Mail Setup window.
- Click E-mail Accounts.



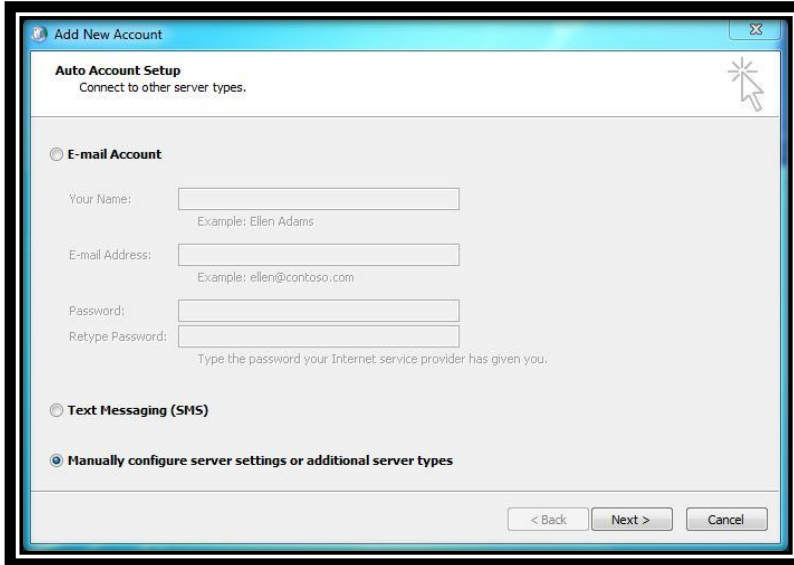
## 2. Add a new account.

- Click New... on the E-mail tab.



## 3. Manually configure server settings.

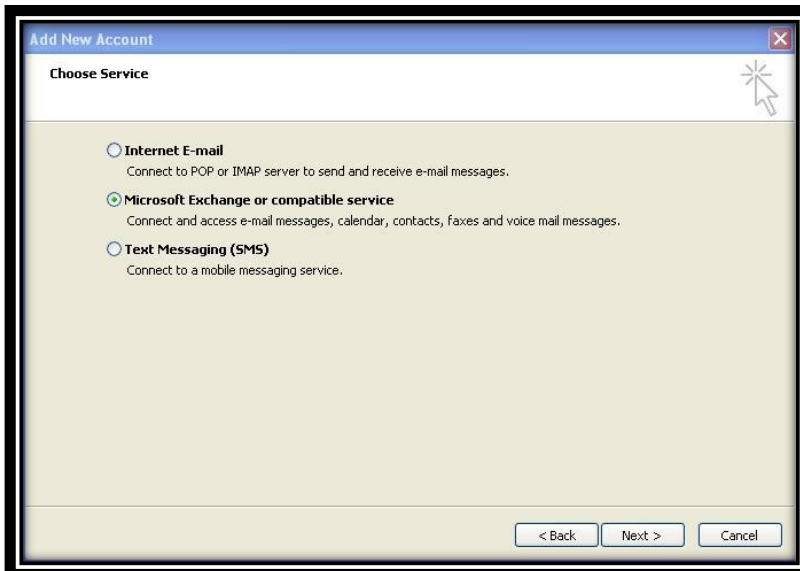
- Select Manually configure server settings or additional server types.
- Click Next.



The screenshot shows the 'Add New Account' dialog box with the 'Auto Account Setup' section. The 'Manually configure server settings or additional server types' option is selected. The 'E-mail Account' section is also visible, with fields for 'Your Name', 'E-mail Address', 'Password', and 'Retype Password'. The 'Text Messaging (SMS)' option is also present but not selected.

## 4. Choose e-mail service.

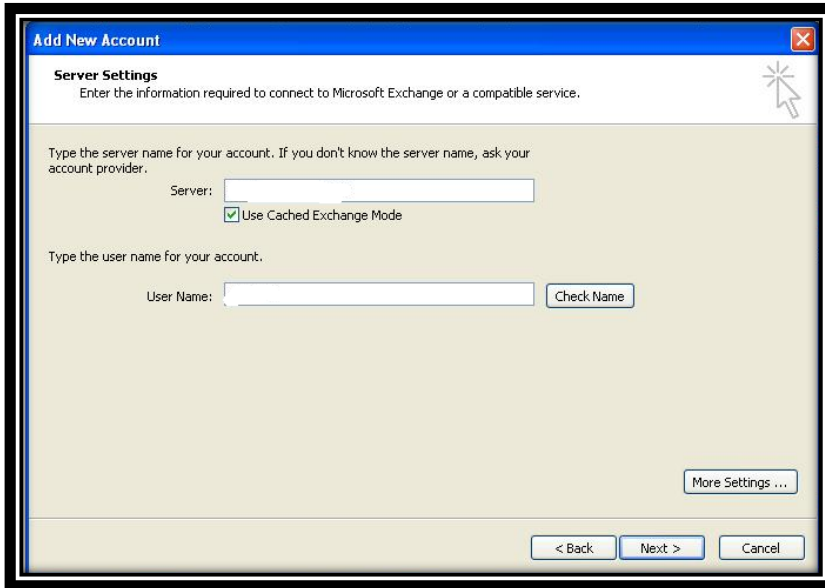
- Select Microsoft Exchange.
- Click Next.



The screenshot shows the 'Add New Account' dialog box with the 'Choose Service' section. The 'Microsoft Exchange or compatible service' option is selected. The 'Internet E-mail' and 'Text Messaging (SMS)' options are also visible but not selected.

5. Enter information in the Settings window.

- Enter Exchange Server Name in the Microsoft Exchange server field.
- Enter your AD username in the User Name field.
- Click Check Name to make sure these fields are correct.
- Click More Settings.



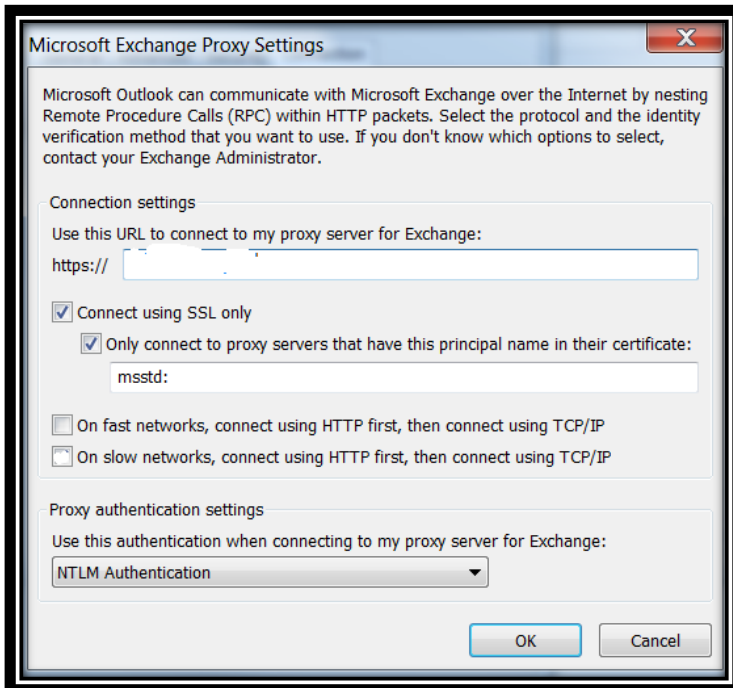
6. This will bring you to another window.

- Click the Connection tab.
- Select Connect to Microsoft Exchange using HTTP under Outlook Anywhere.
- Click Exchange Proxy Settings.



## 7. Set up Exchange Proxy Settings.

- Enter Your Organization External URL in the Connection settings field.
- Select the Check box that says: Only connect to proxy servers....
- Enter: msstd:owa.adcentricity.com/owa
- Select On fast networks, connect using HTTP first, then connect using TCP/IP.
- Select On slow networks, connect using HTTP first, then connect using TCP/IP.
- Select Basic or NTLM Authentication from the pull-down menu under Proxy authentication settings.
- Click OK.
- Click Next, then click Finish.



Microsoft Exchange Proxy Settings

Microsoft Outlook can communicate with Microsoft Exchange over the Internet by nesting Remote Procedure Calls (RPC) within HTTP packets. Select the protocol and the identity verification method that you want to use. If you don't know which options to select, contact your Exchange Administrator.

Connection settings

Use this URL to connect to my proxy server for Exchange:

https://

Connect using SSL only

Only connect to proxy servers that have this principal name in their certificate:

msstd:

On fast networks, connect using HTTP first, then connect using TCP/IP

On slow networks, connect using HTTP first, then connect using TCP/IP

Proxy authentication settings

Use this authentication when connecting to my proxy server for Exchange:

NTLM Authentication

OK Cancel